



Barni Officine Meccaniche S.P.A.

Via Artigianato, 7-7A
23017 Morbegno (SO) - Italy

Tel. +39 0342 614403
Fax +39 0342 612743

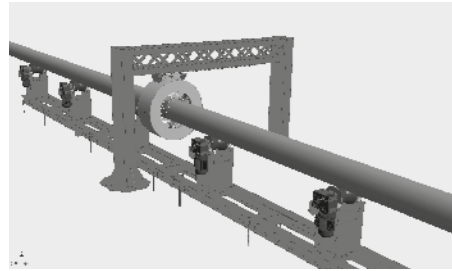
web@barnispa.com
www.barnispa.com

**MANDREL
WORK SHOP**

MANDREL WORK SHOP

After the mill

Mandrel surface's control

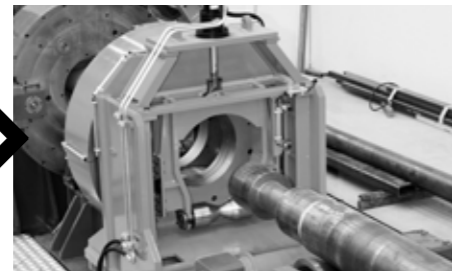


Work shop area



if not

Screw/unscrew mandrel machine



Mandrel straightness control



if OK

Induction furnace



Repair mandrel station



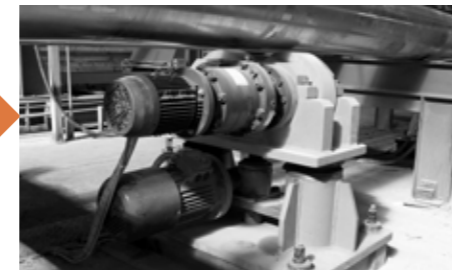
Straightening press



Lathe

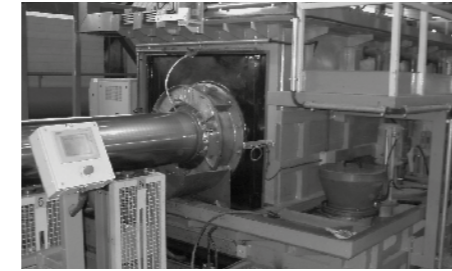


Cooling system



return to the mill

Chromium machine



IF IT NEEDS TO BE REGENERATE

IF IT DOESN'T NEED TO BE REGENERATE

return to the mill

return to the mill

SIZE 7"

Max. mandrels diameter	mm	191,7
Min. mandrels diameter	mm	113,6
Mandrels working length (Lm)	mm	11.500
Mandrel extension length (Lp)	mm	4.250
Tail piece length (L1)	mm	750
Length of mandrels, extension and tail piece (L)	mm	16.500
Max. weight of the complete mandrel	Kg	3.750
Max. weight of the working mandrel	Kg	2.600
Max. weight of the extension	Kg	1.000
Max. weight of the tail piece	Kg	150

Three parts form the mandrel: working mandrel, mandrel extension and tail piece.

SIZE 10 3/4"

Max. mandrels diameter	mm	275
Min. mandrels diameter	mm	127
Mandrels working length (Lm)	mm	12.500
Mandrel extension length (Lp)	mm	5.890
Tail piece length (L1)	mm	910
Length of mandrels, extension and tail piece (L)	mm	19.000
Max. weight of the complete mandrel	Kg	8.860
Max. weight of the working mandrel	Kg	5.850
Max. weight of the extension	Kg	2.790
Max. weight of the tail piece	Kg	220

Three parts form the mandrel: working mandrel, mandrel extension and tail piece.

SIZE 14"

Max. mandrels diameter	mm	369.3
Min. mandrels diameter	mm	156.5
Mandrels working length (Lm)	mm	13.000
Mandrel extension length (Lp)	mm	3.729
Tail piece length (L1)	mm	910
Length of mandrels, extension and tail piece (L)	mm	17.500
Max. weight of the complete mandrel	Kg	13.936
Max. weight of the working mandrel	Kg	10.599
Max. weight of the extension	Kg	3.074
Max. weight of the tail piece	Kg	263

Three parts form the mandrel: working mandrel, mandrel extension and tail piece.

SIZE 16"

Max. mandrels diameter	mm	403.5
Min. mandrels diameter	mm	147.9
Mandrels working length (Lm)	mm	13.000
Mandrel extension length (Lp)	mm	3.750
Tail piece length (L1)	mm	750
Length of mandrels, extension and tail piece (L)	mm	17.600
Max. weight of the complete mandrel	Kg	19.250
Max. weight of the working mandrel	Kg	14.235
Max. weight of the extension	Kg	4.620
Max. weight of the tail piece	Kg	395

Three parts form the mandrel: working mandrel, mandrel extension and tail piece.

SIZE 18"

Max. mandrels diameter	mm	432
Min. mandrels diameter	mm	219.6
Mandrels working length (Lm)	mm	12.500
Mandrel extension length (Lp)	mm	8.000
Tail piece length (L1)	mm	674
Length of mandrels, extension and tail piece (L)	mm	21.174
Max. weight of the complete mandrel	Kg	22.573
Max. weight of the working mandrel	Kg	14.414
Max. weight of the extension	Kg	7.848
Max. weight of the tail piece	Kg	312

Three parts form the mandrel: working mandrel, mandrel extension and tail piece.

